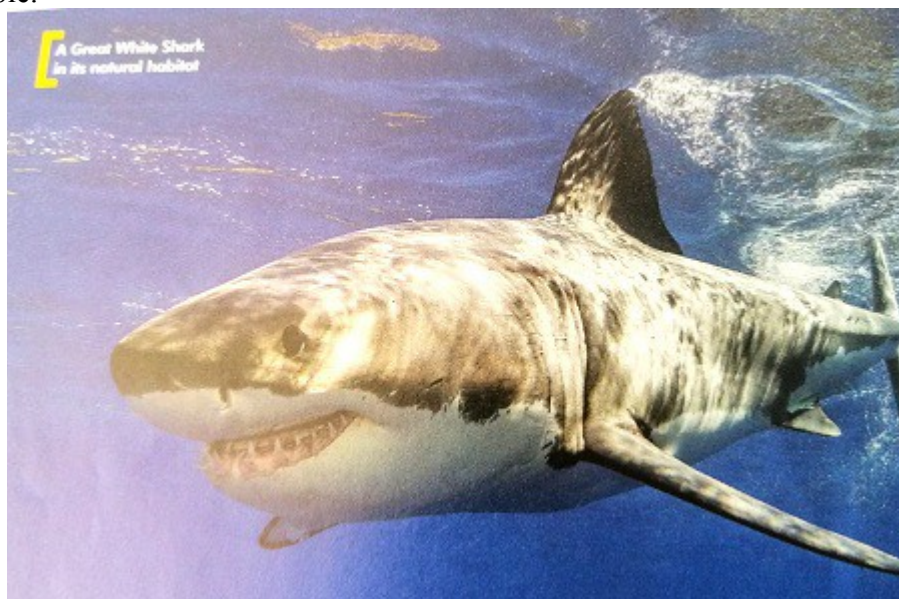


S: A great white shark – listening.

- Dzisiaj przed Tobą dwa zadania z rozumienia ze słuchu, nagrania do tych zadań przesłałam na grupie.



- Odtwórz nagranie 7.3, a następnie kolejne 7.4.

- 1 The average length of a Great White Shark is ... metres.
- 2 The biggest shark ever found was ... kg.
- 3 Great Whites are in fact not all white, but mostly
- 4 A Great White Shark has got approximately ... teeth.
- 5 Its top speed is ... kilometres per hour.
- 6 ... is the Great White Shark's most important sense.

D **1A** **11** Now listen and complete the Skills Booster task.

ROZUMIENIE ZE SŁUCHU **EXAM**

Skills Booster

You will hear an interview with a scientist who studies sharks. For each sentence, fill in the missing information in the numbered space. Write the answers in your notebook. You will hear the interview twice.

Wildlife Watch shark investigation

Number of people who died from shark attacks in 2008: (1) ...

Number of different (2) ... of shark: over 360.

Reason why sharks bite: to find out (3) ... about objects.

Sharks probably don't usually eat humans because humans have too many (4) ...

Approximately (5) ... sharks are killed by humans each year.

Many sharks are now (6) ... extinction.

- Odpowiedzi zapisz w zeszycie, sfotografuj i prześlij na moją pocztę e.mielewczyk1@o2.pl lub na messenger. (do piątku 25.04.20r.)